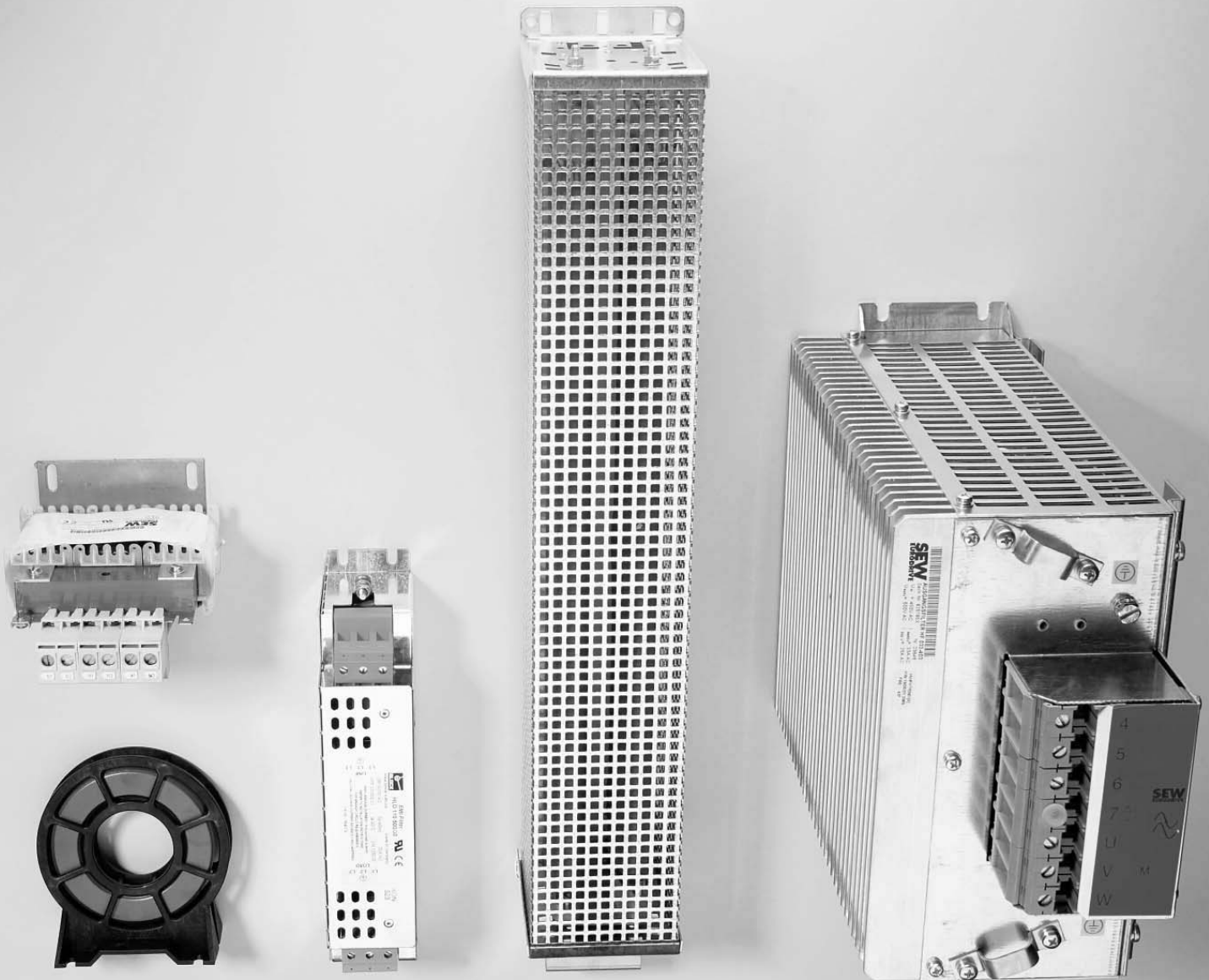




**SEW**  
**EURODRIVE**

SEW-EURODRIVE GmbH & Co KG  
P.O. Box 3023 · D-76642 Bruchsal / Germany  
Phone +49 7251 75-0 · Fax +49 7251 75-1970  
sew@sew-eurodrive.com

→ [www.sew-eurodrive.com](http://www.sew-eurodrive.com)



## HD Output Chokes

Edition 07/2008

1664 5626 / EN

# Operating Instructions



## HD output choke option

### Installation of HD output choke

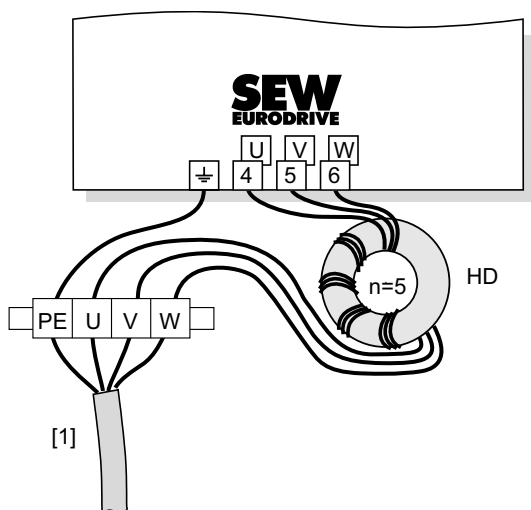
## 1 HD output choke option



- This supplementary information does not replace the detailed operating instructions.
- Installation and startup only by trained personnel observing the relevant accident prevention regulations and operating instructions!

### 1.1 Installation of HD output choke

- Install the output choke close to the inverter **beyond the minimum clearance**.
- Always route all three phases of the motor cable [1] (**not PE**) together through the output choke.
- If the cable is shielded, do **not** route the shield through the output choke.



When using the **HD** output choke, the cable must be wrapped around the choke **5 times**.

For high cable cross sections:

- 4 times with 2 output chokes in series
- 3 times with 3 output chokes in series



### 1.1.1 Installing the HD012 output choke

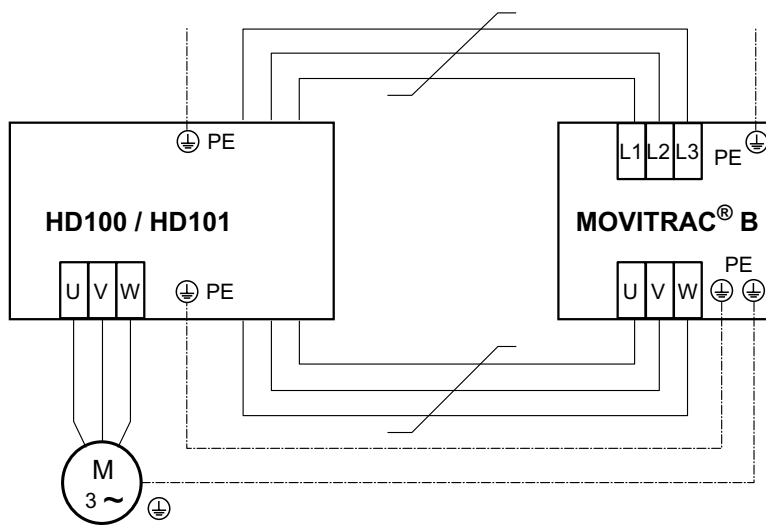
Install output choke under the corresponding inverter. Leave a ventilation space of at least 100 mm (3.94 in) below and above the output choke. Provide a clearance of 10 mm (0.39 in) on each side.

Three alternative connection options are provided for connecting the protective earth. You can connect the PE line of the motor cable directly on the frequency inverter.

### 1.1.2 Installation of output choke HD100 / HD101

Use the supplied screws to mount the HD100 / HD101 output choke together with the MOVITRAC® B frequency inverter onto the conductive mounting surface in the control cabinet.

The connections U / V / W are labeled U / V / W and have to be connected accordingly.



## 1.2 Technical data for HD output chokes

You can reduce the radiated interference of the unshielded motor cable by using an output choke.

Output choke type	HD001	HD002	HD003	HD012
Part number	813 325 5	813 557 6	813 558 4	1821 217 4
Max. power loss $P_{Vmax}$	15 W	8 W	30 W	11 W
Weight	0.5 kg (1 lb)	0.2 kg (0.4 lb)	1.1 kg (2.4 lb)	0.55 kg (1.2 lb)
For cable cross sections	1.5 – 16 mm <sup>2</sup> AWG16 – 6	≤ 1.5 mm <sup>2</sup> ≤ AWG16	≥ 16 mm <sup>2</sup> ≥ AWG6	≤ 4 mm <sup>2</sup> ≤ AWG12
Rated current	–			AC 12 A

Output choke type	HD004 (for MOVIDRIVE® size 6)
Part number	816 885 7
Max. power loss $P_{Vmax}$	100 W
Weight	12.5 kg (27.6 lb)
For cable cross sections	M12 terminal studs
Tightening torque	20 Nm (180 in-lb)
Degree of protection	IP20



## HD output choke option

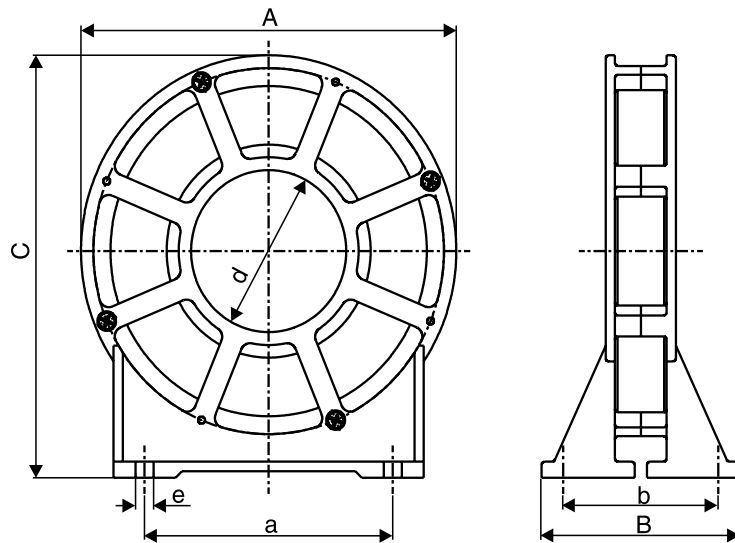
### Technical data for HD output chokes

Output choke type	HD100	HD101
Part number	829 837 8	829 838 6
Rated current	AC 12 A	
Power loss (at rated current)	20 W	
Ambient temperature	-10 °C – +60 °C (+14 – 140 °F) Derating 3% I <sub>N</sub> at 40 °C – 60 °C (113 – 140 °F)	
Degree of protection	IP20	
Mains and the motor connection	Screw terminals 4 mm <sup>2</sup> (AWG 10)	
Inverter connection	Cables with conductor end sleeves	
Weight	0.40 kg (0.88 lb)	0.48 kg (1.1 lb)
Can be sub-mounted for sizes	0S	0L
for MOVITRAC® B ...-5A3	0005 / 0008 / 0011 / 0015	0022 / 0030 / 0040
for MOVITRAC® B ...-2A3	0005 / 0008	0011 / 0015 / 0022



1.2.1 Dimension drawing – HD001/HD002/HD003

All dimensions in [mm (in)]:



Output choke type	Main dimensions			Mounting dimensions		Inside diameter d	Hole dimension e
	A	B	C	a	b		
HD001	121 (4.76)	64 (2.5)	131 (5.16)	80 (3.1)	50 (2.0)	50 (2.0)	5.8 (0.23)
HD002	66 (2.6)	49 (1.9)	73 (2.9)	44 (1.7)	38 (1.5)	23 (0.91)	5.8 (0.23)
HD003	170 (6.69)	64 (2.5)	185 (7.28)	120 (4.72)	50 (2.0)	88 (3.5)	7.0 (0.28)

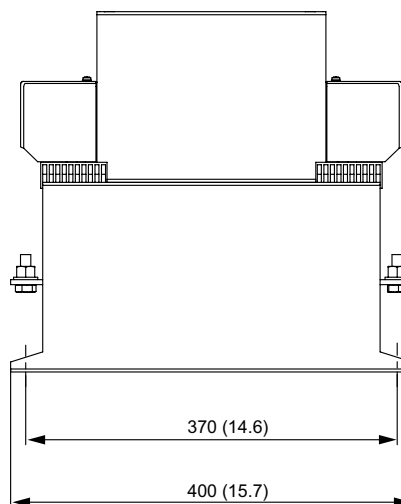
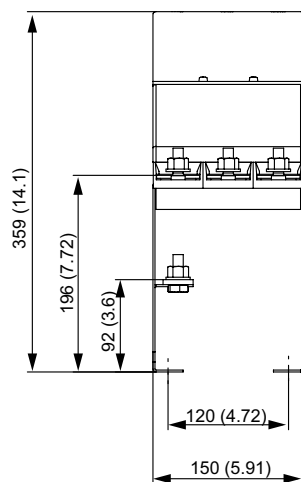


## HD output choke option

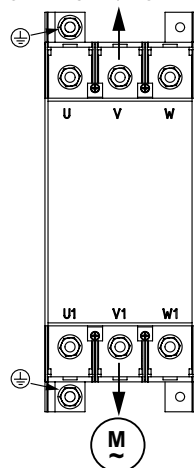
Technical data for HD output chokes

### 1.2.2 Dimension drawing HD004

All dimensions in [mm (in)]:



MOVITRAC® B / MOVIDRIVE® B

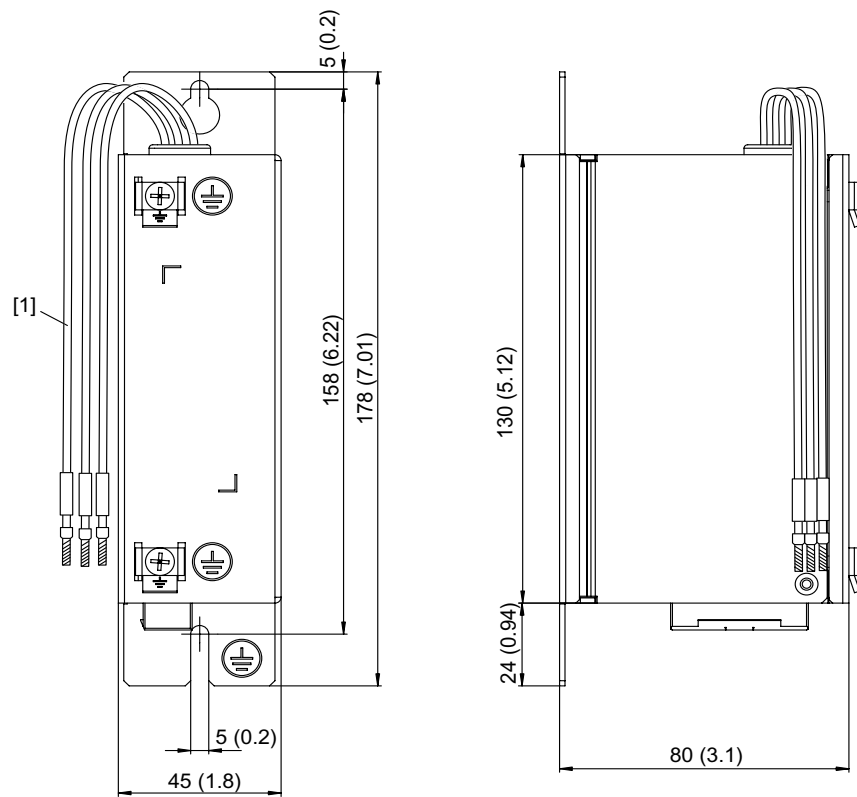


**HD004**



### 1.2.3 Dimension drawing for HD012

All dimensions in [mm (in)]



[1] Length = 100 mm (3.94 in)

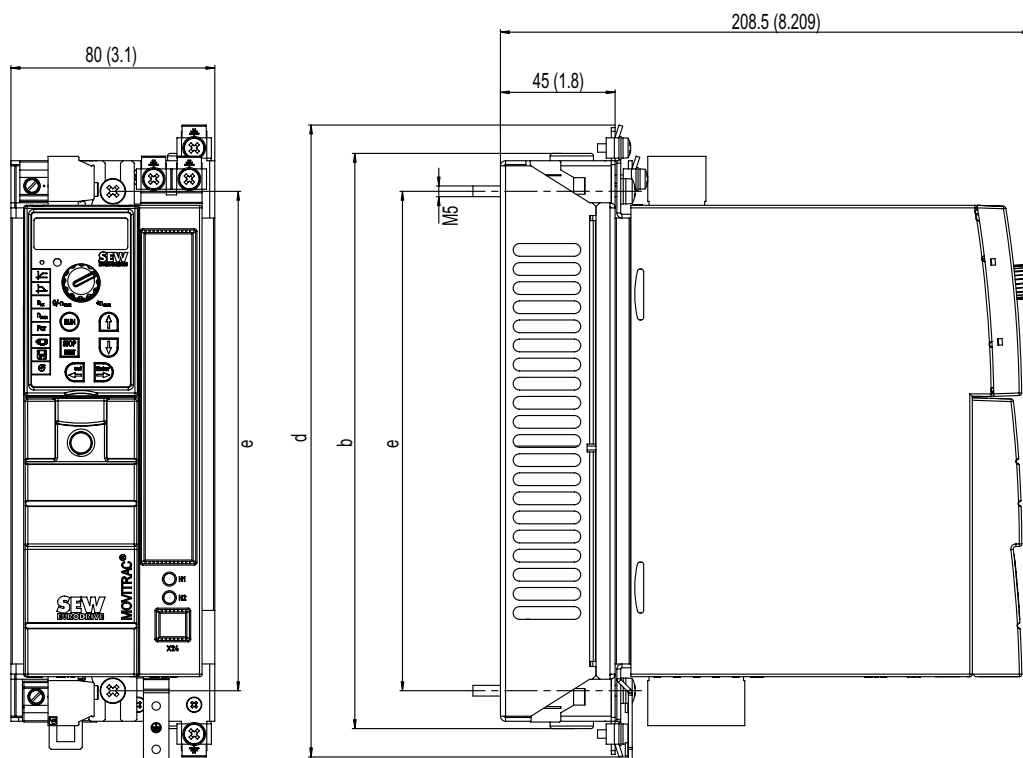


## HD output choke option

Technical data for HD output chokes

### 1.2.4 Dimension drawing HD100/HD101

All dimensions in [mm (in)]:



Output choke type	MOVITRAC® B	b	d	e
HD100	Size 0S	226 (8.90)	248 (9.76)	196 (7.72)
HD101	Size 0L	314.5 (12.38)	336.5 (13.25)	284.5 (11.20)